

76

QUAIL RIDGE PLAT NO. 22 REPLAT, A PUD

BEING A REPLAT OF LOT 13A, QUAIL RIDGE PLAT NO. 22, A PUD, AS RECORDED IN PLAT BOOK 95, PAGES 67 THROUGH 69, INCLUSIVE, PUBLIC RECORDS OF PALM BEACH COUNTY, FLORIDA, AND LYING IN SECTION 30, TOWNSHIP 45 SOUTH, RANGE 43 EAST, PALM BEACH COUNTY, FLORIDA.

PREPARING SURVEYOR & MAPPER'S STATEMENT

THIS INSTRUMENT WAS PREPARED BY LESLIE C. BISPOTT, P.S.M. OF MICHAEL B. SCHORAH AND ASSOCIATES, INC., 1850 FOREST HILL BOULEVARD., SUITE 206, WEST PALM BEACH, FLORIDA, 33406.

LEGEND

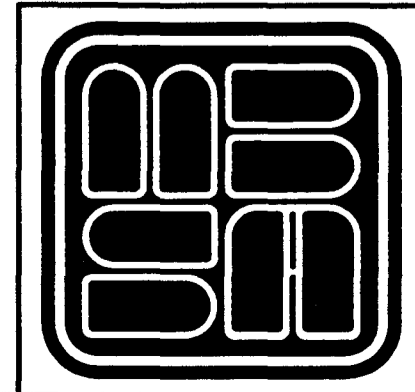
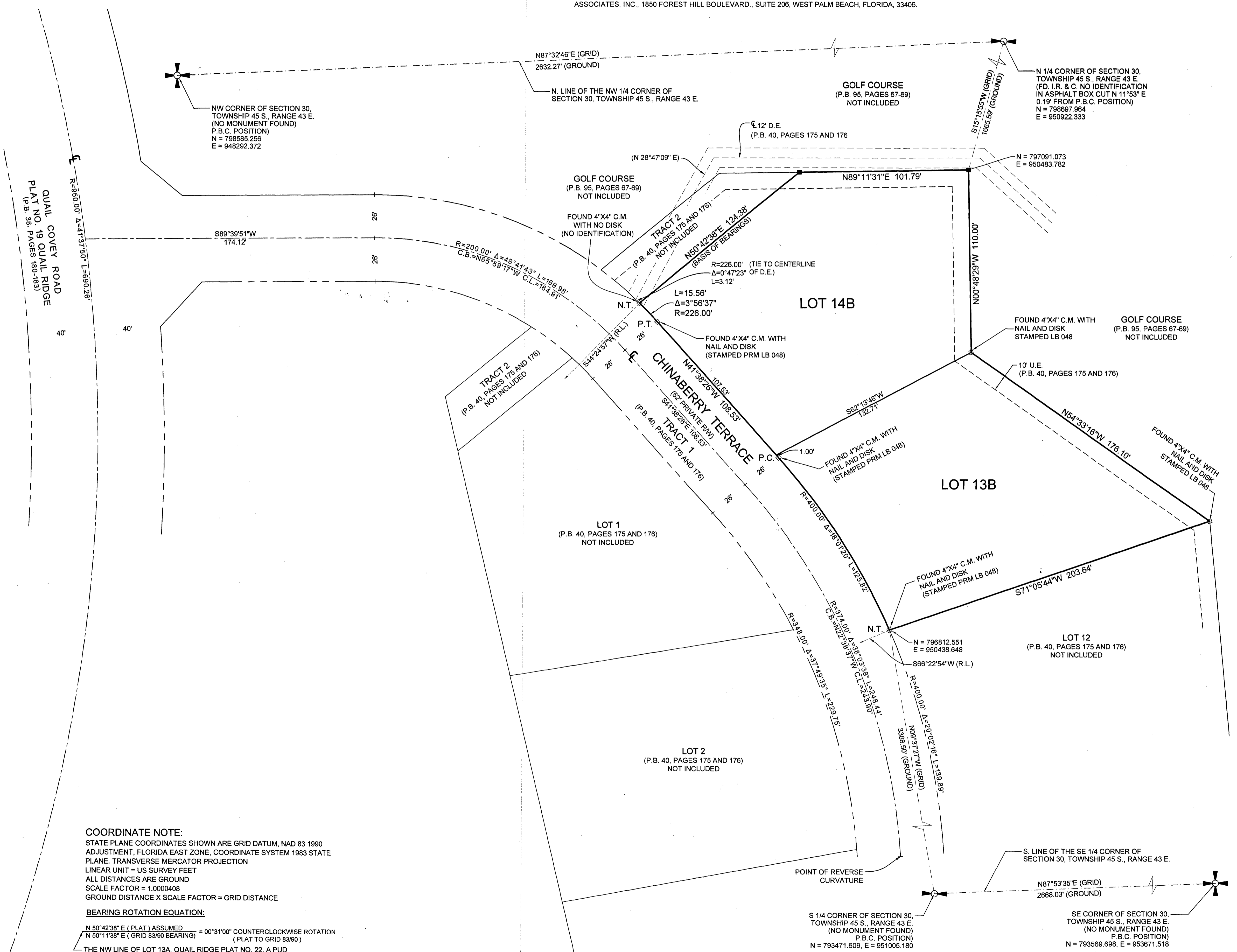
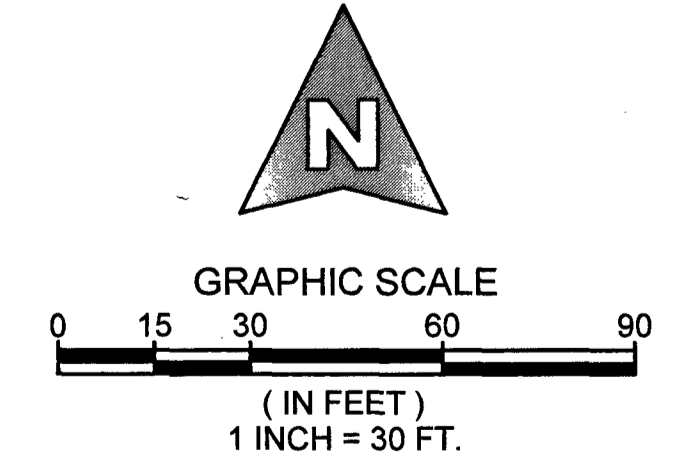
- P.C.P. = PERMANENT CONTROL POINT
- P.R.M. = PERMANENT REFERENCE MONUMENT
- O.R.B. = OFFICIAL RECORD BOOK
- P.B. = PLAT BOOK
- P.G.S. = PAGES
- D.B. = DEED BOOK
- P.B.C. = PALM BEACH COUNTY
- R.W. = RIGHT OF WAY
- CL = CENTERLINE
- U.E. = UTILITY EASEMENT
- D.E. = DRAINAGE EASEMENT
- R = RADIUS
- L = ARC LENGTH
- Δ = CURVE CENTRAL ANGLE
- ⊙ = FOUND PALM BEACH COUNTY DISK IN CONCRETE
- ⊙ = SET NAIL AND ALUMINUM DISK, STAMPED P.C.P. L.B. 2438
- = SET 4"x4"x24" C.M. WITH ALUMINUM DISK, STAMPED P.R.M. L.B. 2438
- = FOUND 4"x4"x24" C.M., AS SHOWN
- = SET MAG NAIL AND 1 1/4" BRASS WASHER STAMPED PRM LB 2438
- C.L. = CHORD LENGTH
- C.B. = CHORD BEARING
- R.L. = RADIAL LINE
- N = NORTHING, WHEN USED WITH COORDINATES
- E = EASTING, WHEN USED WITH COORDINATES
- FD. = FOUND
- OA = OVERALL
- C.M. = CONCRETE MONUMENT
- L.E. = LANDSCAPE EASEMENT
- NO. = NUMBER
- P.S.M. = PROFESSIONAL SURVEYOR AND MAPPER
- P.U.D. = PLANNED UNIT DEVELOPMENT
- W.M.E. = WATER MANAGEMENT EASEMENT
- W.M.A.E. = WATER MANAGEMENT ACCESS EASEMENT
- NPBCID# = NORTHERN PALM BEACH COUNTY IMPROVEMENT DISTRICT
- LB. = PROFESSIONAL SURVEYOR AND MAPPER BUSINESS LICENSE NUMBER
- EB. = PROFESSIONAL ENGINEER BUSINESS LICENSE NUMBER
- P.C. = POINT OF CURVATURE
- P.T. = POINT OF TANGENCY
- P.R.C. = POINT OF REVERSE CURVATURE
- N.T. = POINT OF NON TANGENCY
- ⊕ = SECTION CORNER

COORDINATE NOTE:
 STATE PLANE COORDINATES SHOWN ARE GRID DATUM, NAD 83 1990 ADJUSTMENT, FLORIDA EAST ZONE, COORDINATE SYSTEM 1983 STATE PLANE, TRANSVERSE MERCATOR PROJECTION
 LINEAR UNIT = US SURVEY FEET
 ALL DISTANCES ARE GROUND
 SCALE FACTOR = 1.0000408
 GROUND DISTANCE X SCALE FACTOR = GRID DISTANCE

BEARING ROTATION EQUATION:

$$\frac{N 50^{\circ}42'38" E (PLAT) ASSUMED}{N 50^{\circ}11'38" E (GRID 83/90 BEARING)} = 00^{\circ}31'00" \text{ COUNTERCLOCKWISE ROTATION (PLAT TO GRID 83/90)}$$

THE NW LINE OF LOT 13A, QUAIL RIDGE PLAT NO. 22, A PUD (PLAT BOOK 95, PAGES 67-69)



MICHAEL B. SCHORAH & ASSOCIATES, INC.
 1850 FOREST HILL BLVD., SUITE 206
 WEST PALM BEACH, FLORIDA 33406
 EB# 2438 TEL. (561) 968-0080 FAX. (561) 642-9726 LB# 2438

QUAIL RIDGE PLAT NO. 22 REPLAT, A PUD